

VK23 ROCK DRILL CONFIGURATION



LIGHT WEIGHT DRILL

We reserve the right for changes !

It. No	DESCRIPTION	Qty	Part No.	VK23 DI	VK23 SI	VK23 T	VK23 SIA	VK23 SI2A	VK23 SI2AH	VK23 SIP-S25	VK23 TA	DI, SI, T KIT	DIA, TA SIA KIT	VK23 LZB
	ROCK DRILL VK23 DI WET OPTION		9 302 14	●								●	—	
	ROCK DRILL VK23 SI WET OPTION		9 302 16		●							●	—	
	ROCK DRILL VK23 T WET OPTION		9 302 20			●						●	—	
	ROCK DRILL VK23 SIA AIR OPTION		9 302 15				●					—	●	
	ROCK DRILL VK23 SI2A AIR OPTION		9 302 26					●				—	●	
	ROCK DRILL VK23 SI2A-AIR OPTION / HARD		9 302 26A						●				●	
	ROCK DRILL VK23 SIP-S25 AIR OPTION		9 302 24							●		●	—	
	ROCK DRILL VK23 TA AIR OPTION		9 302 25								●	—	●	
	ROCK DRILL VK23 LZB OPTION		9 302 30											●
1	PISTON COMPLETE (ITEM 1.1, 1.2)	1	9 302 00 039	●	●	●	●	●	●	●	●	—	—	●
1.1	PISTON	1	302 00 039	●	●	●	●	●	●	●	●	○	○	●
1.2	TWIST NUT GUIDE	1	302 00 040	●	●	●	●	●	●	●	●	●	●	●
2	CENTRAL COVER COMPLETE (ITEM 2.1, 2.2)	1	9 302 14 004	●	●	●	●	●	●	●	●	—	—	●
2.1	CENTRAL COVER	1	302 14 007	●	●	●	●	●	●	●	●	—	—	●
2.2	BUSH	1	302 00 057	●	●	●	●	●	●	●	●	●	●	●
3	WATER VALVE COMPLETE (ITEM 3.1 - 3.13)	1	9 302 14 007	●	—	—	—	—	—	—	—	—	—	—
3	WATER VALVE COMPLETE (ITEM 3.1 - 3.13)	1	9 302 00 090	—	●	●	—	—	—	●	—	—	—	—
3.1	VALVE HOUSING	1	302 00 017	●	●	●	—	—	—	●	—	—	—	—
3.2	FUSE	1	026 10 030	●	●	●	—	—	—	●	—	●	—	—
3.3	VALVE COVER	1	302 00 025	●	●	●	—	—	—	●	—	—	—	—
3.4	WASHER Cu	1	302 00 029	●	●	●	—	—	—	●	—	●	—	—
3.5	O RING	2	046 52 140	●	●	●	—	—	—	●	—	●	—	—
3.6	VALVE PISTON	1	302 00 027	●	●	●	—	—	—	●	—	—	—	—
3.7	SPRING	1	031 06 007	●	●	●	—	—	—	●	—	●	—	—
3.8	O RING	1	006 58 586	●	●	●	—	—	—	●	—	●	—	—
3.9	RUBBER SEAL	1	046 54 040	●	●	●	—	—	—	●	—	●	—	—
3.10	GUIDE HOUSING	1	302 00 031	●	●	●	—	—	—	●	—	—	—	—
3.11	WASHER	1	302 00 021	●	●	●	—	—	—	●	—	●	—	—
3.12	RUBBER SEAL	1	046 53 080	●	●	●	—	—	—	●	—	●	—	—
3.13	WATER TUBE 420 mm	1	302 14 013	●	—	—	—	—	—	—	—	●	—	—

It. No	DESCRIPTION	Qty	Part No.	VK23 DI	VK23 SI	VK23 T	VK23 SIA	VK23 SI2A	VK23 SI2AH	VK23 SIP-S25	VK23 TA	DI, SI, T KIT	DIA, TA SIA KIT	
3.13	WATER TUBE 380 mm	1	302 00 020	—	●	●	—	—	—	●	—	—	—	—
3	AIR VALVE COMPLETE (ITEM 3.1 - 3.5)	1	9 302 00 018	—	—	—	●	●	●	—	●	—	—	●
3.1	AIR VALVE HOUSING	1	302 00 018	—	—	—	●	●	●	—	●	—	—	●
3.2	WASHER Cu	1	302 00 029	—	—	—	●	●	●	—	●	—	●	●
3.3	AIR TUBE WASHER	1	302 00 021	—	—	—	●	●	●	—	●	—	●	●
3.4	RUBBER SEAL	1	046 53 080	—	—	—	●	●	●	—	●	—	●	●
3.5	AIR TUBE	1	302 00 075	—	—	—	●	●	●	—	●	—	●	●
4	BACKHEAD COMPLETE (ITEM 4.1 - 4.13)	1	9 302 00 002	●	●	●	●	●	●	●	●	—	—	●
4.1	BACK HEAD	1	302 00 001	●	●	●	●	●	●	●	●	—	—	●
4.2	AIR COOK	1	302 00 002	●	●	●	●	●	●	●	●	—	—	●
4.3	INDEX PIN	1	307 01 012	●	●	●	●	●	●	●	●	○	○	●
4.4	SPRING	1	031 06 008	●	●	●	●	●	●	●	●	○	○	●
4.5	AIR GOOSE NECK SWIVEL	1	302 00 008	●	●	●	●	●	●	●	●	—	—	●
4.6	PACKING	1	302 00 117	●	●	●	●	●	●	●	●	●	●	●
4.7	NUT	1	022 01 012	●	●	●	●	●	●	●	●	—	—	●
4.8	SPRING WASHER	1	023 50 012	●	●	●	●	●	●	●	●	●	●	●
4.9	AIR COOK HANDLE	1	302 00 005	●	●	●	●	●	●	●	●	—	—	●
4.10	PRESSURE BAR	1	302 00 006	●	●	●	●	●	●	●	●	●	●	●
4.11	ADAPTOR - AIR INLET	1	302 00 009	●	●	●	●	●	●	●	●	—	—	●
4.12	O RING	1	046 52 213	●	●	●	●	●	●	●	●	●	●	●
4.13	O RING	1	046 52 160	●	●	●	●	●	●	●	●	●	●	●
4.14	O RING	1	004 30 328	●	●	●	●	●	●	●	●	●	●	●
5	HANDLE COMPLETE (ITEM 5.1 - 5.4)	1	9 302 14 001	●	—	—	—	—	—	—	—	—	—	—
5.1	HAND GRIP	1	302 14 001	●	—	—	—	—	—	—	—	○	○	—
5.2	CONNECTION STUD	1	302 14 002	●	—	—	—	—	—	—	—	—	—	—
5.3	R - HAND SIDE OF D HANDLE	1	302 14 003	●	—	—	—	—	—	—	—	—	—	—
5.4	L - HAND SIDE OD D HANDLE	1	302 14 004	●	—	—	—	—	—	—	—	—	—	—
5	SINKER HANDLE COMPLETE (ITEM 5.1 - 5.10)	1	9 302 14 006	—	●	—	●	—	—	—	—	—	—	—
5.1	OUTER STUD	2	307 06 007	—	●	—	●	—	—	—	—	—	—	—
5.2	OUTER HAND GRIP	2	307 06 002	—	●	—	●	—	—	—	—	—	—	—

It. No	DESCRIPTION	Qty	Part No.	VK23 DI	VK23 SI	VK23 T	VK23 SIA	VK23 SI2A	VK23 SI2AH	VK23 SIP-S25	VK23 TA	DI, SI, T KIT	DIA, TA SIA KIT	VK23 LZB
5.3	O RING	2	046 52 065	—	●	—	●	—	—	—	—	—	—	—
5.4	CONNECTION - TOP	2	307 06 008	—	●	—	●	—	—	—	—	—	—	—
5.5	COIL SPRING	2	307 06 004	—	●	—	●	—	—	—	—	—	—	—
5.6	CONNECTION BRACKET	2	302 14 010	—	●	—	●	—	—	—	—	—	—	—
5.7	BOLT	2	307 06 006	—	●	—	●	—	—	—	—	—	—	—
5.8	CONNECTION STUD	1	302 14 011	—	●	—	●	—	—	—	—	—	—	—
5.9	HAND GRIP	1	302 14 012	—	●	—	●	—	—	—	—	—	—	—
5.10	RUBBER SHIELD	2	307 06 017	—	●	—	●	—	—	—	—	—	—	—
5	PUSH PULL HANDLE COMPLETE (ITEM 5.1-5.11)	1	9 302 14 015	—	—	—	—	●	—	●	—	—	—	—
5	PUSH PULL HANDLE COMPL.-HARD(ITEM 5.1-	1	9 302 26 001	—	—	—	—	—	●	—	—	—	—	—
5.1	OUTER STUD	2	307 06 007	—	—	—	—	●	●	●	—	—	—	—
5.2	OUTER HAND GRIP	2	307 06 002	—	—	—	—	●	●	●	—	—	—	—
5.3	O RING	2	046 52 065	—	—	—	—	●	●	●	—	—	—	—
5.4	CONNECTION - TOP	2	307 06 008	—	—	—	—	●	●	●	—	—	—	—
5.5	COIL SPRING SOFT	4	307 06 004	—	—	—	—	●	—	●	—	—	—	—
5.5	COIL SPRING- HARD	4	307 06 095	—	—	—	—	—	●	—	—	—	—	—
5.6	CONNECTION BRACKET	2	302 14 022	—	—	—	—	●	●	●	—	—	—	—
5.7	BOLT	2	307 06 031	—	—	—	—	●	●	●	—	—	—	—
5.8	CONNECTION STUD	1	302 14 011	—	—	—	—	●	●	●	—	—	—	—
5.9	HAND GRIP	1	302 14 012	—	—	—	—	●	●	●	—	—	—	—
5.10	RUBBER SHIELD	4	307 06 017	—	—	—	—	●	●	●	—	—	—	—
5.11	WASHER	2	307 06 032	—	—	—	—	●	●	●	—	—	—	—
5	T HANDLE COMPLETE (ITEM. 5.1 - 5.9)	1	9 302 00 079	—	—	●	—	—	—	—	●	—	—	—
5.1	NUT	1	64-978-230-DM	—	—	●	—	—	—	—	●	—	—	—
5.2	WASHER	3	023 50 016	—	—	●	—	—	—	—	●	—	—	—
5.3	HANDLE	1	9 302 20 001	—	—	●	—	—	—	—	●	—	—	—
5.3.1	BUSH	1	302 00 015	—	—	●	—	—	—	—	●	—	—	—
5.3.2	HAND GRIP	1	302 14 001	—	—	●	—	—	—	—	●	—	—	—
5.4	R-HAND SIDE	1	302 00 010	—	—	●	—	—	—	—	●	—	—	—
5.5	L-HAND SIDE	1	302 00 011	—	—	●	—	—	—	—	●	—	—	—

It. No	DESCRIPTION	Qty	Part No.	VK23 DI	VK23 SI	VK23 T	VK23 SIA	VK23 SI2A	VK23 SI2AH	VK23 SIP-S25	VK23 TA	DI, SI, T KIT	DIA, TA SIA KIT	VK23 LZB
5.6	BOLT	1	302 00 079	—	—	●	—	—	—	—	●	—	—	—
5.7	WASHER	2	307 06 032	—	—	●	—	—	—	—	●	—	—	—
6	ROTATION CHUCK COMPLETE (ITEM 6.1 - 6.3)	1	9 302 14 002	●	●	●	●	●	●	—	●	—	—	●
6	ROTATION CHUCK COMPLETE (ITEM 6.1 - 6.3)	1	9 302 22 001	—	—	—	—	—	—	●	—	—	—	—
6.1	ROTATION CHUCK	2	302 00 059	●	●	●	●	●	●	●	●	○	○	●
6.2	CHUCK NUT	1	302 00 067	●	●	●	●	●	●	●	●	●	●	●
6.3	CHUCK INSERT	1	307 01 032	●	●	●	●	●	●	—	●	●	●	●
6.3	CHUCK INSERT S2	1	307 33 001	—	—	—	—	—	—	●	—	●	●	—
7	FRONT HEAD COMPLETE (ITEM 7.1 - 7.6)	1	9 302 00 058	●	●	●	●	●	●	—	●	—	—	●
7	FRONT HEAD COMPLETE (ITEM 7.1 - 7.6)	1	9 302 22 002	—	—	—	—	—	—	●	—	—	—	—
7.1	STEEL RETAINER	1	307 05 036	●	●	●	●	●	●	—	●	○	○	●
7.1	STEEL RETAINER	1	307 33 002	—	—	—	—	—	—	●	—	○	○	—
7.2	FRONT HEAD	1	302 00 058	●	●	●	●	●	●	●	●	—	—	●
7.3	RUBBER MOUNTING	1	302 00 071	●	●	●	●	●	●	●	●	○	○	●
7.4	RETAINER PLATE	1	302 00 072	●	●	●	●	●	●	●	●	○	○	●
7.5	RETAINER BOLT	1	307 01 030	●	●	●	●	●	●	●	●	○	○	●
7.6	RETAINER PIN	2	006 91 793	●	●	●	●	●	●	●	●	○	○	●
8	SIDE BOLT COMPLETE (ITEM 8.1, 8.2)	2	9 302 00 052	●	●	●	●	●	●	●	●	—	—	●
8.1	SIDE BOLT	2	302 00 052	●	●	●	●	●	●	●	●	○	○	●
8.2	SIDE BOLT NUT	2	302 00 053	●	●	●	●	●	●	●	●	○	○	●
9	PAWL KIT COMPLETE (ITEM 9.1 - 9.3)	1	9 302 14 005	●	●	●	●	●	●	●	●	—	—	●
9.1	SPRING	4	031 06 009	●	●	●	●	●	●	●	●	●	●	●
9.2	PAWL	4	307 01 047	●	●	●	●	●	●	●	●	●	●	●
9.3	PAWL PIN	4	302 00 043	●	●	●	●	●	●	●	●	●	●	●
12	RIFLE BAR	1	302 00 041	●	●	●	●	●	●	●	●	●	●	●
13	GUIDE DISC	1	302 00 045	●	●	●	●	●	●	●	●	—	—	●
14	RATCHET RING	1	302 00 046	●	●	●	●	●	●	●	●	●	●	●
15	DISTRIBUTOR	1	302 14 026	●	●	●	●	●	●	●	●	—	—	●
16	VALVE PLATE	1	302 14 027	●	●	●	●	●	●	●	●	—	—	●
17	DISTRIBUTOR PIN	1	302 00 050	●	●	●	●	●	●	●	●	—	—	●

It. No	DESCRIPTION	Qty	Part No.	VK23 DI	VK23 SI	VK23 T	VK23 SIA	VK23 SI2A	VK23 SI2AH	VK23 SIP-S25	VK23 TA	DI, SI, T KIT	DIA, TA SIA KIT	VK23 LZB
18	DISTRIBUTOR BUSH	1	302 00 074	●	●	●	●	●	●	●	●	○	○	●
19	CYLINDER	1	302 00 103	●	●	●	●	●	●	●	●	—	—	●
20	PIN	1	024 54 334	●	●	●	●	●	●	●	●	—	—	●
21	WATER GOOSE NECK SWIVEL	1	307 05 012	●	●	●	—	—	—	●	—	—	—	—
22	WATER CONNECTION COVER	1	302 00 033	—	—	—	●	●	●	—	●	—	—	●
22	WATER CONNECTION NIPPLE	1	302 00 032	●	●	●	—	—	—	●	—	—	—	—
23	WATER PRESSURE SEAL	1	046 53 110	●	●	●	—	—	—	●	—	●	●	—
24	MOUNTING ATTACHMENT COM. (ITEM 24.1 - 24.6)	1	9 302 14 003	●	—	—	—	—	—	●	—	—	—	—
24.1	PIN	1	024 51 080	●	—	—	—	—	—	●	—	○	○	—
24.2	NUT	2	022 25 020	●	—	—	—	—	—	●	—	○	○	—
24.3	WASHER	1	023 10 013	●	—	—	—	—	—	●	—	○	○	—
24.4	HEAD FOR AIRLEG	1	302 14 006	●	—	—	—	—	—	●	—	—	—	—
24.5	MOUNTING STUD	1	302 14 009	●	—	—	—	—	—	●	—	—	—	—
24.6	MOUNTING YOKE	1	302 14 005	●	—	—	—	—	—	●	—	—	—	—
25	STRAINER	1	307 01 037	●	●	●	—	—	—	●	—	●	—	—
26	SUPPORT PLATE	1	302 00 127	—	—	—	—	—	—	—	—	—	—	●
27	MOUNTING STUD	1	302 00 128	—	—	—	—	—	—	—	—	—	—	●
28	NUT	1	022 25 020	—	—	—	—	—	—	—	—	—	—	●
29	WASHER	1	023 10 013	—	—	—	—	—	—	—	—	—	—	●
30	CONNECTOR	1	424 00 199	—	—	—	—	—	—	—	—	—	—	●

— NOT IN PART LIST

● INTEGRAL PART

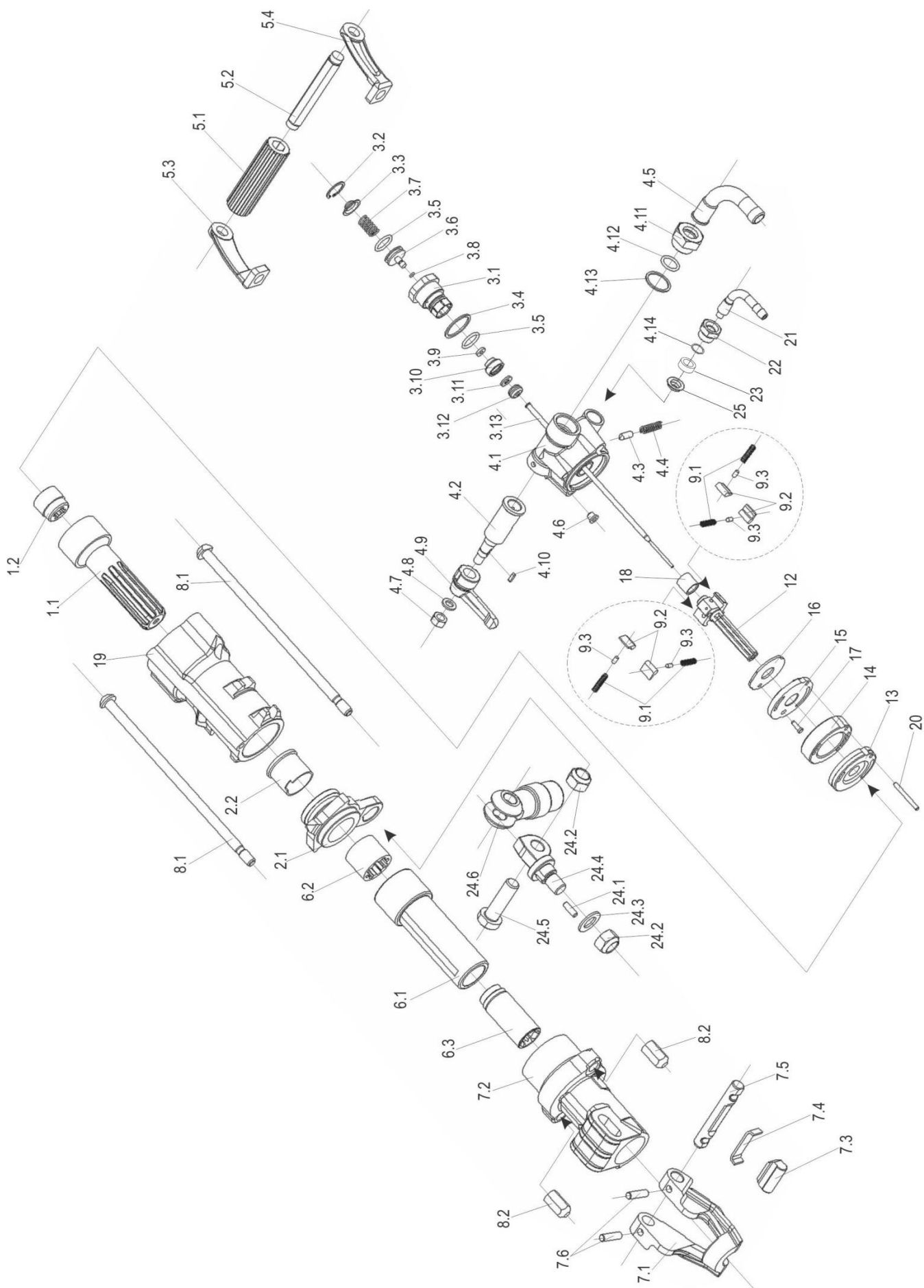
○ ADITIONAL GENERAL RENNOVATION KIT PARTS 9 302 14 012 (S22) OR 9 302 22 004 (S25)

S22 - DI, SI, T BASIC KIT Part. No. 9 302 14 011

S22 - DIA, SIA, SI2A BASIC KIT Part. No. 9 302 14 013

S25 - DI, SI, T BASIC KIT Part. No. 9 302 24 001

S25 - DIA, SIA BASIC KIT Part. No. 9 302 22 003

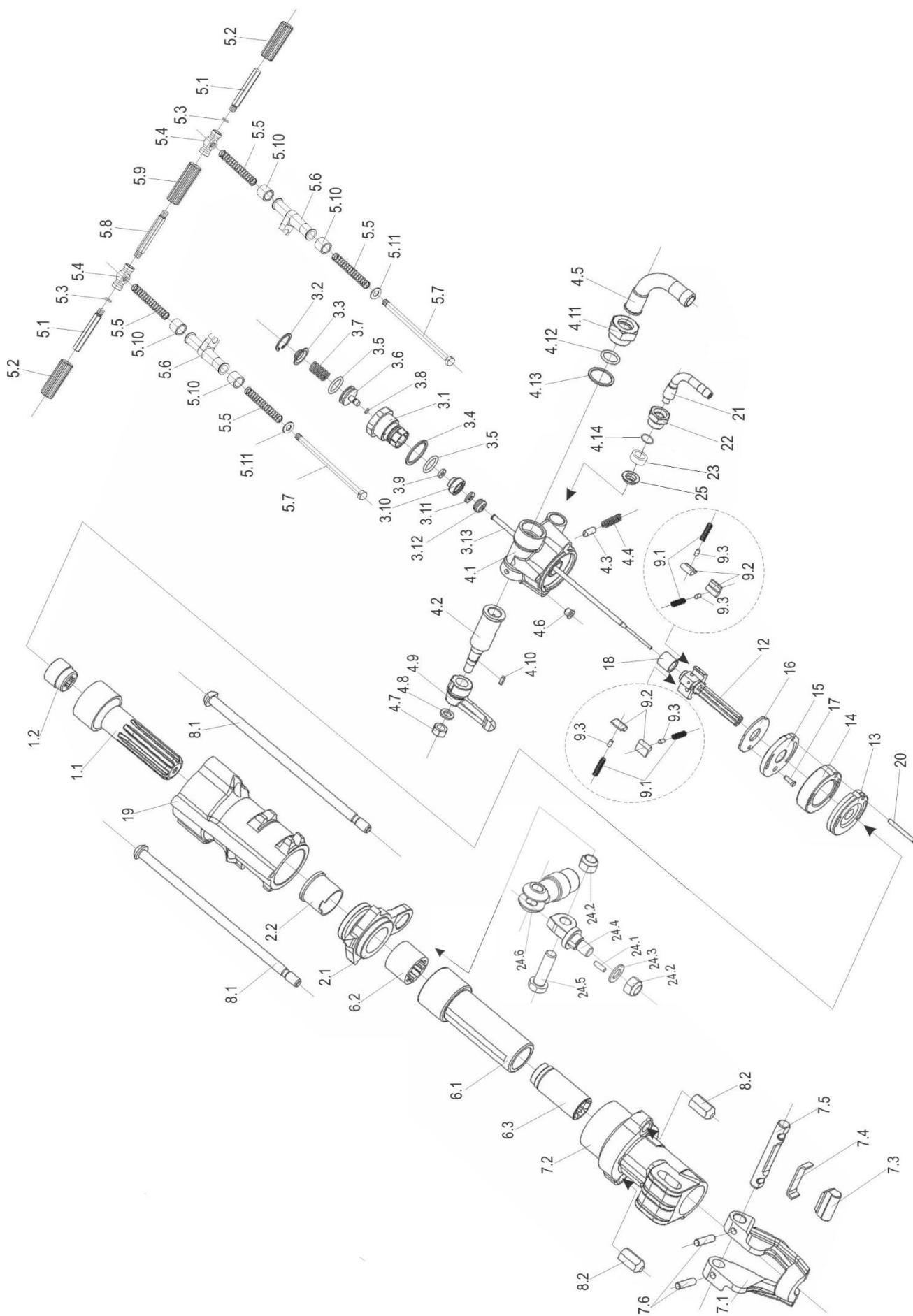




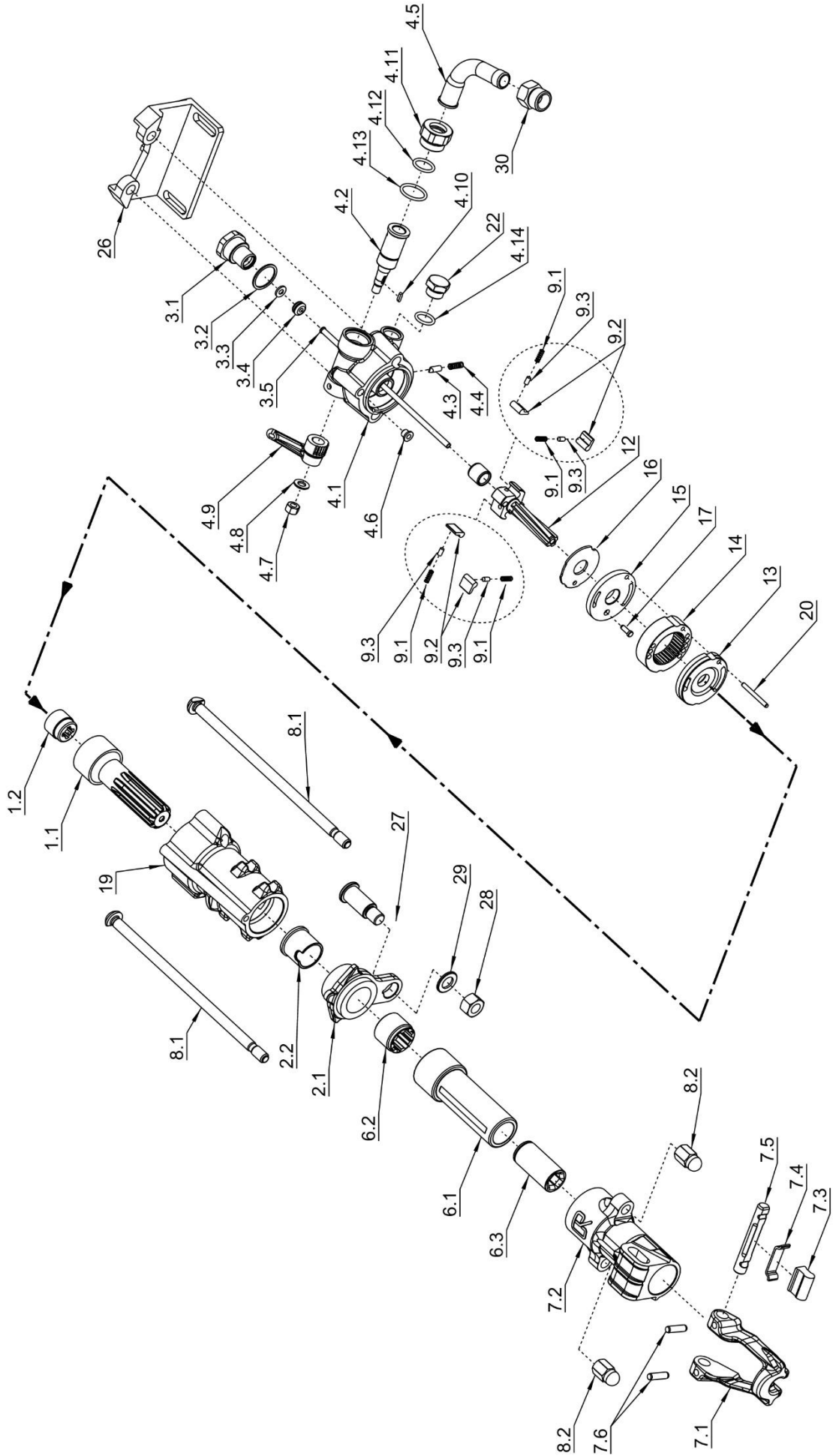




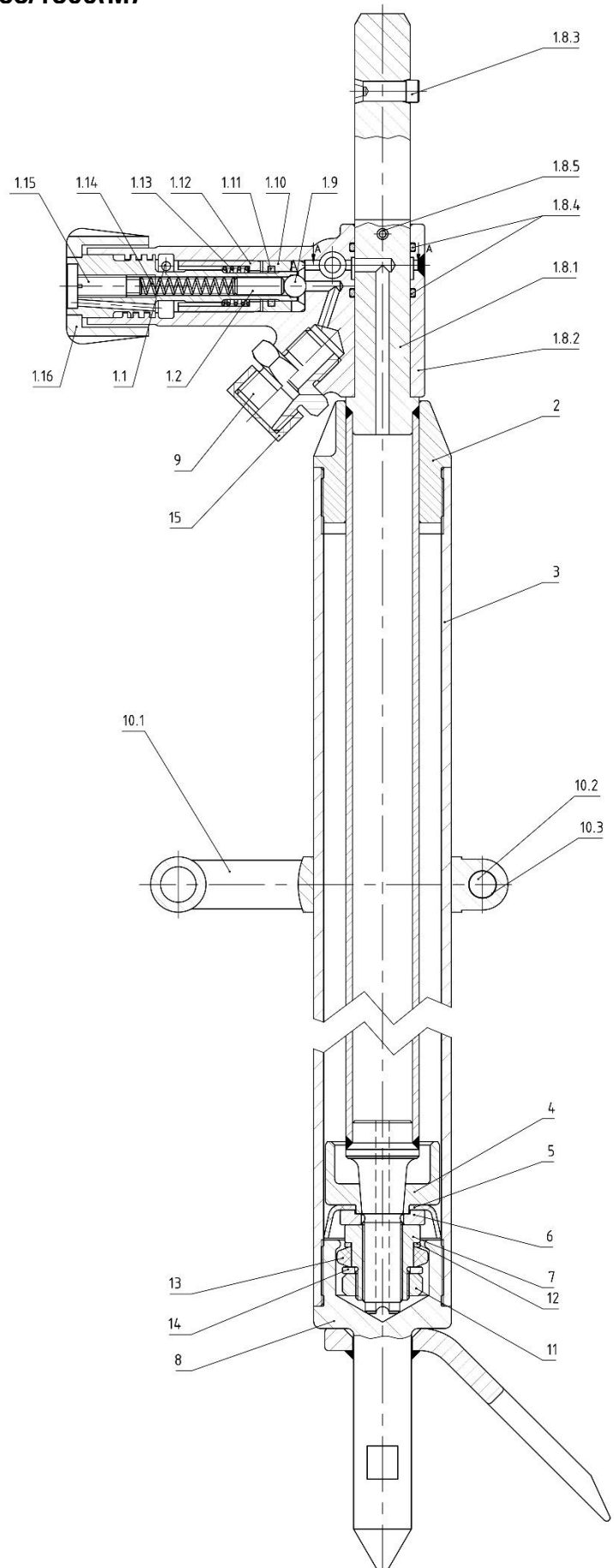
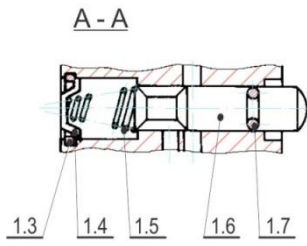








AIR LEGS
PN 53/1000(M)
PN 53/1300(M)



It. No	DESCRIPTION	Qty	Part No.	PN 53/1000(M)	PN 53/1300(M)
	<i>AIR LEG PN 53/1000</i>		9 373 300	●	—
	<i>AIR LEG PN 53/1300</i>		9 372 300	—	●
	<i>AIR LEG PN 53/1000M</i>		9 373 301	●	—
	<i>AIR LEG PN 53/1300M</i>		9 372 301	—	●
1	PISTON ROD & VALVE COMPLETE	1	9 373 00 002	●	—
1	PISTON ROD & VALVE COMPLETE	1	9 372 00 002	—	●
1.1*	PIN	1	024 54 093	●	●
1.2*	PIN	1	374 00 018	●	●
1.3*	SEEGER RING COVER	1	026 10 016	●	●
1.4	COVER	1	374 00 015	●	●
1.5*	SPRING	1	031 06 078	●	●
1.6	SPOOL	1	374 00 007	●	●
1.7*	O - RING	1	046 52 040	●	●
1.8	PISTON ROD & VALVE BODY	1	9 373 00 003	●	—
1.8	PISTON ROD & VALVE BODY	1	9 372 00 018	—	●
1.8.1	PISTON ROD	1	373 00 016	●	—
1.8.1	PISTON ROD	1	372 00 016	—	●
1.8.2	VALVE BODY PIN	1	374 00 051	●	●
1.8.3	PIN	1	64-979-730-DM	●	●
1.8.4*	O - RING	2	046 52 676	●	●
1.8.5*	SPRING PIN	1	024 51 061	●	●
1.9*	BALL	1	030 30 002	●	●
1.10	BUSH	1	374 00 012	●	●
1.11*	O – RING	1	046 52 085	●	●
1.12	RIFLE BAR	1	374 00 014	●	●
1.13*	SPRING	1	031 06 075	●	●
1.14*	SPRING	1	031 06 077	●	●
1.15	REGULATION SCREW	1	374 00 003	●	●
1.16	HANDLE CONTROL	1	374 00 052	●	●
2	CAP	1	372 00 017	●	●
3	CYLINDER 1000	1	373 00 001	●	—
3	CYLINDER 1300	1	372 00 001	—	●
3	CYLINDER 1000M	1	373 00 007	●	—
3	CYLINDER 1300M	1	372 00 025	—	●
4	PISTON GUIDE	1	372 00 003	●	●
5*	SEAL PRESSURE	1	005 23 494	●	●
6	WASHER	1	372 00 020	●	●
7	NUT	1	372 00 019	●	●
8	FOOT STUD & CLAW	1	372 00 007	●	●
9	NIPPLE	1	424 00 058	●	●
10	HANDLE COMPLETE	1	9 372 00 010	●	●
10.1	HANDLE	1	372 00 010	●	●
10.2	SCREW	1	021 01 044	●	●
10.3	NUT	1	022 01 010	●	●
11	NUT	1	372 00 021	●	●
12	WASHER	1	372 00 024	●	●
13*	BRAKE RING	1	372 00 023	●	●
14	WASHER	1	372 00 022	●	●
15	CAP	1	415 00 001	●	●

* PARTS INCLUDED IN WEAR KIT 89 372 00 004

AIRLEGS PN 53/1000(M), PN 53/1300(M)

- Rock drills are mounted on airlegs;
- drilling is performed horizontally and under an obtuse angle.
- The drill maintains a constant force which increases its efficiency.
- A partial absorption of vibrations.
- Compressed air should be dry and clean; Pressure min. 5 bar
- Inside diameter of hose should be min. 16 mm;
- Reduction valve is to be opened slowly
- For hammers weight class 15 - 30 kg

TECHNICAL DATA FOR AIRLEGS

Typ	Ordering No.	For hammer	Weight	Lenght [mm]		Piston diameter	Piston stroke	Piston return	Travel feeding power (6 bar)
			[Kg]	Max	Min	[mm]	[mm]	[mm]	[N]
PN 53/1000	9 373 300	VK23	11,5	2440	1430	53	1000	MANUAL	1300
PN 53/1000M	9 373 301	VK23							
PN 53/1300	9 372 300	VK23	13,5	2740	1730	53	1300	MANUAL	1300
PN 53/1300M	9 372 301	VK23							